

# Presbyterian Hospital

Presbyterian Hospital is the largest acute care hospital in New Mexico with 453 beds and provides a full range of medical and surgical healthcare services. Located in the center of Albuquerque, it is part of the not-for-profit Presbyterian Healthcare Services and is dedicated to the health of its patients, members and communities. The path connects to the local neighborhood in the historic Silver District with tree-lined sidewalks.

**Difficulty:** Grade 1

**Trail Surface:** 4-foot wide concrete

## Loop 1 (blue)

**Trail Distance:** .5 mile

**Steps:** 1,056

## Loop 2 (red)

**Trail Distance:** .75 mile

**Steps:** 1,584

## Loop 3 (yellow)

**Trail Distance:** 1.0 mile

**Steps:** 2,112

**Lighting:** None

**Attractions:** Located in Silver Hill Historical district; good visibility



## Nearby Major Cross Streets:

Central and I-25

## ABQ Ride:

766 Rapid Ride on Central next to hospital or call 243-7433 for current schedule

## Public Facilities:

Restrooms at hospital

## Parking:

Parking lot at hospital and neighborhood street



—Presbyterian Hospital

Zip Code

**87108**

# Presbyterian Hospital: Loop 1

**Trail Distance:** .5 mile

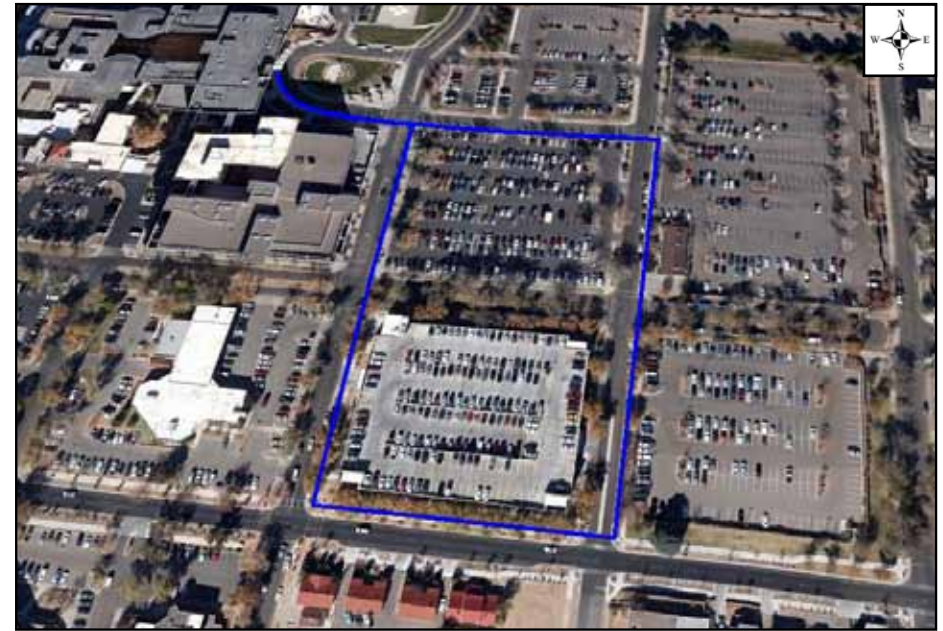
**Difficulty:** Grade 1

**Steps:** 1,056

**Trail Surface:** 4-foot wide concrete

**Lighting:** None

**Attractions:** Located in Silver Hill Historical district; good visibility



## Nearby Major Cross Streets:

Central and I-25

## ABQ Ride:

766 Rapid Ride on Central next to hospital or call 243-7433 for current schedule

## Public Facilities:

Restrooms at hospital

## Parking:

Parking lot at hospital and neighborhood street

# Presbyterian Hospital: Loop 2

**Trail Distance:** .75 mile

**Difficulty:** Grade 1

**Steps:** 1,584

**Trail Surface:** 4-foot wide concrete

**Lighting:** None

**Attractions:** Located in Silver Hill Historical district; good visibility



## Nearby Major Cross Streets:

Central and I-25

## ABQ Ride:

766 Rapid Ride on Central next to hospital or call 243-7433 for current schedule

## Public Facilities:

Restrooms at hospital

## Parking:

Parking lot at hospital and neighborhood street

# Presbyterian Hospital: Loop 3

**Trail Distance:** 1.0 mile

**Difficulty:** Grade 1

**Steps:** 1,584

**Trail Surface:** 4-foot wide concrete

**Lighting:** None

**Attractions:** Located in Silver Hill Historical district; good visibility



## Nearby Major Cross Streets:

Central and I-25

## ABQ Ride:

766 Rapid Ride on Central next to hospital or call 243-7433 for current schedule

## Public Facilities:

Restrooms at hospital

## Parking:

Parking lot at hospital and neighborhood street